



Verification Report

Applicant : Shenzhen Huafurui Technology Co., Ltd.
Address : Unit 1401 & 1402, 14/F, Jinqi Zhigu Mansion (No. 4 Building of Chongwen Garden), Crossing of the Liuxian Street and Tangling Road, Taoyuan Street, Nanshan District, Shenzhen, 518055, P.R. China

Report on the submitted samples said to be:

Sample Name(s) : Tablet
Trade Mark : CUBOT
Part No. : TAB 40
Sample Received Date : May 15, 2023
Testing Period : May 15, 2023 ~ May 22, 2023
June 01, 2023 ~ June 02, 2023
Date of Report : June 05, 2023
Testing Location : 901, No.40 Building, Xialang Industrial Zone, Heshuikou Community, Matian Street, Guangming District, Shenzhen, Guangdong, China
Results : Please refer to next page(s).

TEST REQUEST	CONCLUSION
As specified by client, based on the performed tests on submitted sample, the result of Lead(Pb), Cadmium(Cd), Mercury(Hg), Hexavalent Chromium(Cr(VI)), PBBs, PBDEs, Dibutyl Phthalate(DBP), Butylbenzyl Phthalate(BBP), Di-2-ethylhexyl Phthalate(DEHP) and Diisobutyl phthalate(DIBP) content comply with the limits set by RoHS Directive 2011/65/EU with amendment (EU) 2015/863.	PASS

Signed for and on behalf of LCS

Lily dan



**Results:****A. EU RoHS Directive 2011/65/EU and its amendment directives**

Test method: With reference to IEC 62321-1:2013&IEC 62321-2:2021&IEC 62321-3-1:2013, Screening by X-ray Fluorescence Spectroscopy (XRF)

Sample No.	Sample Description	Results						Date of sample submission/ Resubmission
		Cd	Pb	Hg	Cr ^v	Br ^v		
						PBBs	PBDEs	
1	Black glass screen	BL	BL	BL	BL	BL	BL	2023-05-15
2	Transparent plastic board	BL	BL	BL	BL	BL	BL	2023-05-15
3	White plastic sheet	BL	BL	BL	BL	BL	BL	2023-05-15
4	Frosted plastic sheet	BL	BL	BL	BL	BL	BL	2023-05-15
5	Silver plastic sheet	BL	BL	BL	BL	BL	BL	2023-05-15
6	Silver metal plate	BL	BL	BL	BL	/	/	2023-05-15
7	White tape	BL	BL	BL	BL	BL	BL	2023-05-15
8	White plastic frame	BL	BL	BL	BL	BL	BL	2023-05-15
9	Silver gray metal shell	BL	BL	BL	BL	/	/	2023-05-15
10	Blue plastic sheet	BL	BL	BL	BL	BL	BL	2023-05-15
11	Black plastic sheet	BL	BL	BL	BL	BL	BL	2023-05-15
12	Grey plastic shell	BL	BL	BL	BL	BL	BL	2023-05-15
13	Gold metal nut	X	BL	BL	BL	/	/	2023-06-01
14	Black foam adhesive	BL	BL	BL	BL	BL	BL	2023-05-15
15	Black plastic frame	BL	BL	BL	BL	BL	BL	2023-05-15
16	Silver metal sheet	BL	BL	BL	BL	/	/	2023-05-15
17	Black adhesive tape	BL	BL	BL	BL	BL	BL	2023-05-15
18	Silver gray adhesive tape	BL	BL	BL	BL	BL	BL	2023-05-15
19	Copper colored metal sheet	BL	BL	BL	BL	/	/	2023-05-15
20	Silver metal strip	BL	BL	BL	BL	/	/	2023-05-15
21	Grey cotton cloth	BL	BL	BL	BL	BL	BL	2023-05-15
22	Black plastic sheet	BL	BL	BL	BL	BL	BL	2023-05-15
23	Silver metal screw	BL	BL	BL	BL	/	/	2023-05-15
24	Silver metal screw	OL	OL	BL	X	/	/	2023-05-15
25	Silver metal sheet	BL	BL	BL	BL	/	/	2023-05-15
26	Blue metal block	BL	BL	BL	BL	/	/	2023-05-15
27	Silver metal sheet	BL	BL	BL	BL	/	/	2023-05-15
28	Silver metal contact piece	BL	BL	BL	BL	/	/	2023-05-15
29	Black plastic frame	BL	BL	BL	BL	BL	BL	2023-05-15



Shenzhen LCS Compliance Testing Laboratory Ltd.

Add: 901, No.40 Building, Xialang Industrial Zone, Heshuikou Community, Matian Street, Guangming District, Shenzhen, Guangdong, China

Tel: +(86) 0755-82591330 | E-mail: webmaster@lcs-cert.com | Web: www.lcs-cert.com

Scan code to check authenticity



Sample No.	Sample Description	Results						Date of sample submission/ Resubmission
		Cd	Pb	Hg	Cr [▼]	Br [▼]		
						PBBs	PBDEs	
30	Yellow FPC	BL	BL	BL	BL	BL	BL	2023-05-15
31	Brown plastic sheet	BL	BL	BL	BL	BL	BL	2023-05-15
32	Silver metal sheet	BL	BL	BL	BL	/	/	2023-05-15
33	Black plastic seat	BL	BL	BL	BL	BL	BL	2023-05-15
34	Gold metal contact	BL	BL	BL	BL	/	/	2023-05-15
35	Silver metal sheet	BL	BL	BL	BL	/	/	2023-05-15
36	White plastic LED light	BL	BL	BL	BL	BL	BL	2023-05-15
37	Black FPC	BL	BL	BL	BL	BL	BL	2023-05-15
38	Silver metal solder	BL	BL	BL	BL	/	/	2023-05-15
39	Black plastic wire cover	BL	BL	BL	BL	BL	BL	2023-05-15
40	Silver metal wire core	BL	BL	BL	BL	/	/	2023-05-15
41	Gold metal head	BL	BL	BL	BL	/	/	2023-05-15
42	Yellow plastic LED light	BL	BL	BL	BL	BL	BL	2023-05-15
43	Black foam ring	BL	BL	BL	BL	BL	BL	2023-05-15
44	Silver metal shell	BL	BL	BL	BL	/	/	2023-05-15
45	Black plastic shell	BL	BL	BL	BL	BL	BL	2023-05-15
46	Black glass photosensitive film	BL	BL	BL	BL	BL	BL	2023-05-15
47	Transparent plastic sheet	BL	BL	BL	BL	BL	BL	2023-05-15
48	Black film ring	BL	BL	BL	BL	BL	BL	2023-05-15
49	Copper metal coil	BL	BL	BL	BL	/	/	2023-05-15
50	Black plastic shell	BL	BL	BL	BL	BL	BL	2023-05-15
51	Silver metal ring	BL	BL	BL	BL	/	/	2023-05-15
52	Black adhesive tape	BL	BL	BL	BL	BL	BL	2023-05-15
53	Silver metal sheet	BL	BL	BL	BL	/	/	2023-05-15
54	Silver metal magnet	BL	BL	BL	BL	/	/	2023-05-15
55	Black plastic wire cover	BL	BL	BL	BL	BL	BL	2023-05-15
56	Red plastic wire cover	BL	BL	BL	BL	BL	BL	2023-05-15
57	Silver metal wire core	BL	BL	BL	BL	/	/	2023-05-15
58	White plastic terminal	BL	BL	BL	BL	BL	BL	2023-05-15
59	Gold metal contact	BL	BL	BL	BL	/	/	2023-05-15
60	Black plastic shell	BL	BL	BL	BL	BL	BL	2023-05-15



Shenzhen LCS Compliance Testing Laboratory Ltd.

Add: 901, No.40 Building, Xialang Industrial Zone, Heshuikou Community, Matian Street, Guangming District, Shenzhen, Guangdong, China

Tel: +(86) 0755-82591330 | E-mail: webmaster@lcs-cert.com | Web: www.lcs-cert.com

Scan code to check authenticity



Sample No.	Sample Description	Results						Date of sample submission/ Resubmission
		Cd	Pb	Hg	Cr [▼]	Br [▼]		
						PBBs	PBDEs	
61	Silver metal contact piece	BL	BL	BL	BL	/	/	2023-05-15
62	Black rubber sheet	BL	BL	BL	BL	BL	BL	2023-05-15
63	Silver metal shell	BL	BL	BL	BL	/	/	2023-05-15
64	Silver metal magnet	BL	BL	BL	BL	/	/	2023-05-15
65	White plastic block	BL	BL	BL	BL	BL	BL	2023-05-15
66	Copper metal coil	BL	BL	BL	BL	/	/	2023-05-15
67	Silver metal block	BL	BL	BL	BL	/	/	2023-05-15
68	Copper colored metal ring	BL	BL	BL	BL	/	/	2023-05-15
69	Green plastic sheet	BL	BL	BL	BL	BL	BL	2023-05-15
70	Red plastic wire cover	BL	BL	BL	BL	BL	BL	2023-05-15
71	Blue plastic wire cover	BL	BL	BL	BL	BL	BL	2023-05-15
72	Black plastic strip	BL	BL	BL	BL	BL	BL	2023-05-15
73	Grey plastic interface	BL	BL	BL	BL	BL	BL	2023-05-15
74	Gold metal contact	BL	BL	BL	BL	/	/	2023-05-15
75	Green plastic PCB	BL	BL	BL	BL	BL	BL	2023-05-15
76	Brown plastic patch capacitor	BL	BL	BL	BL	BL	BL	2023-05-15
77	Black plastic patch resistor	BL	BL	BL	BL	BL	BL	2023-05-15
78	White plastic interface	BL	BL	BL	BL	BL	BL	2023-05-15
79	Silver metal stylus	BL	BL	BL	BL	/	/	2023-05-15
80	Beige plastic interface	BL	BL	BL	BL	BL	BL	2023-05-15
81	Gold metal stylus	BL	BL	BL	BL	/	/	2023-05-15
82	Black plastic strip	BL	BL	BL	BL	BL	BL	2023-05-15
83	White plastic interface	BL	BL	BL	BL	BL	BL	2023-05-15
84	Silver metal contact piece	BL	BL	BL	BL	/	/	2023-05-15
85	Silver metal cover	BL	BL	BL	BL	/	/	2023-05-15
86	Black plastic strip	BL	BL	BL	BL	BL	BL	2023-05-15
87	Grey plastic interface	BL	BL	BL	BL	BL	BL	2023-05-15
88	Gold metal contact	BL	BL	BL	BL	/	/	2023-05-15
89	Silver metal shell	BL	BL	BL	BL	/	/	2023-05-15
90	Black plastic block	BL	BL	BL	BL	BL	BL	2023-05-15
91	Gold metal contact	BL	BL	BL	BL	/	/	2023-05-15



Shenzhen LCS Compliance Testing Laboratory Ltd.

Add: 901, No.40 Building, Xialang Industrial Zone, Heshuikou Community, Matian Street, Guangming District, Shenzhen, Guangdong, China

Tel: +(86) 0755-82591330 | E-mail: webmaster@lcs-cert.com | Web: www.lcs-cert.com

Scan code to check authenticity



Sample No.	Sample Description	Results						Date of sample submission/ Resubmission
		Cd	Pb	Hg	Cr [▼]	Br [▼]		
						PBBs	PBDEs	
92	Brown plastic patch capacitor	BL	BL	BL	BL	BL	BL	2023-05-15
93	Black metal magnetic core	BL	BL	BL	BL	/	/	2023-05-15
94	Silver metal crystal oscillator	BL	BL	BL	BL	/	/	2023-05-15
95	Brown metal core	BL	BL	BL	BL	/	/	2023-05-15
96	Black plastic IC	BL	BL	BL	BL	BL	BL	2023-05-15
97	Black plastic PCB	BL	BL	BL	BL	BL	BL	2023-05-15
98	White soft rubber	BL	BL	BL	BL	BL	BL	2023-05-15
99	Silver metal shell	BL	BL	BL	BL	/	/	2023-05-15
100	Silver metal inner shell	BL	BL	BL	BL	/	/	2023-05-15
101	White plastic block	BL	BL	BL	BL	BL	BL	2023-05-15
102	White colloid	BL	BL	BL	BL	BL	BL	2023-05-15
103	Silver metal stylus	BL	BL	BL	BL	/	/	2023-05-15
104	White plastic outer cover	BL	BL	BL	BL	BL	BL	2023-05-15
105	Red plastic wire cover	BL	BL	BL	BL	BL	BL	2023-05-15
106	Black plastic wire cover	BL	BL	BL	BL	BL	BL	2023-05-15
107	Green plastic wire cover	BL	BL	BL	BL	BL	BL	2023-05-15
108	White plastic wire cover	BL	BL	BL	BL	BL	BL	2023-05-15
109	Copper colored metal wire core	BL	BL	BL	BL	/	/	2023-05-15
110	Silver metal shell	BL	BL	BL	BL	/	/	2023-05-15
111	Beige plastic shell	BL	BL	BL	BL	BL	BL	2023-05-15
112	Silver metal sheet	BL	BL	BL	BL	/	/	2023-05-15
113	Black plastic block	BL	BL	BL	BL	BL	BL	2023-05-15
114	Silver metal stylus	BL	BL	BL	BL	/	/	2023-05-15
115	Blue plastic PCB	BL	BL	BL	BL	BL	BL	2023-05-15
116	Silver metal solder	BL	BL	BL	BL	/	/	2023-05-15
117	White plastic shell	BL	BL	BL	BL	BL	BL	2023-05-15
118	Black fabric mesh	BL	BL	BL	BL	BL	BL	2023-05-15
119	White plastic sleeve	BL	BL	BL	BL	BL	BL	2023-05-15
120	White plastic outer cover	BL	BL	BL	BL	BL	BL	2023-05-15
121	Blue metal enameled wire	BL	BL	BL	BL	/	/	2023-05-15



Shenzhen LCS Compliance Testing Laboratory Ltd.

Add: 901, No.40 Building, Xialang Industrial Zone, Heshuikou Community, Matian Street, Guangming District, Shenzhen, Guangdong, China

Tel: +(86) 0755-82591330 | E-mail: webmaster@lcs-cert.com | Web: www.lcs-cert.com

Scan code to check authenticity



Sample No.	Sample Description	Results						Date of sample submission/ Resubmission
		Cd	Pb	Hg	Cr [▼]	Br [▼]		
						PBBs	PBDEs	
122	Green metal enameled wire	BL	BL	BL	BL	/	/	2023-05-15
123	White foam ring	BL	BL	BL	BL	BL	BL	2023-05-15
124	Silver metal shell	BL	BL	BL	BL	/	/	2023-05-15
125	Transparent film	BL	BL	BL	BL	BL	BL	2023-05-15
126	Copper metal coil	BL	BL	BL	BL	/	/	2023-05-15
127	Silver metal magnet	BL	BL	BL	BL	/	/	2023-05-15
128	White colloid	BL	BL	BL	BL	BL	BL	2023-05-15
129	Silver metal solder	BL	BL	BL	BL	/	/	2023-05-15
130	Green plastic PCB	BL	BL	BL	BL	BL	BL	2023-05-15
131	White plastic shell	BL	BL	BL	BL	BL	BL	2023-05-15
132	Silver metal wire clamp	BL	BL	BL	BL	/	/	2023-05-15
133	Gold metal enameled wire	BL	BL	BL	BL	/	/	2023-05-15
134	Red metal enameled wire	BL	BL	BL	BL	/	/	2023-05-15
135	Gold metal shell	BL	BL	BL	BL	/	/	2023-05-15
136	Silver metal ring	BL	BL	BL	BL	/	/	2023-05-15
137	Red film circle	BL	BL	BL	BL	BL	BL	2023-05-15
138	Red plastic board	BL	BL	BL	BL	BL	BL	2023-05-15
139	Silver metal shrapnel	BL	BL	BL	BL	/	/	2023-05-15
140	Silver metal solder	BL	BL	BL	BL	/	/	2023-05-15
141	Green plastic PCB	BL	BL	BL	BL	BL	BL	2023-05-15
142	White soft rubber	BL	BL	BL	BL	BL	BL	2023-05-15
143	Black plastic sleeve	BL	BL	BL	BL	BL	BL	2023-05-15
144	Silver metal plug	BL	BL	BL	BL	/	/	2023-05-15
145	White soft rubber	BL	BL	BL	BL	BL	BL	2023-05-15
146	Yellow label	BL	BL	BL	BL	BL	BL	2023-05-15
147	White soft rubber	BL	BL	BL	BL	BL	BL	2023-05-15
148	Silver metal shell	BL	BL	BL	BL	/	/	2023-05-15
149	White soft rubber	BL	BL	BL	BL	BL	BL	2023-05-15
150	White plastic block	BL	BL	BL	BL	BL	BL	2023-05-15
151	Gold metal stylus	BL	BL	BL	BL	/	/	2023-05-15
152	White plastic outer cover	BL	BL	BL	BL	BL	BL	2023-05-15
153	Red plastic wire cover	BL	BL	BL	BL	BL	BL	2023-05-15
154	Black plastic wire cover	BL	BL	BL	BL	BL	BL	2023-05-15



Shenzhen LCS Compliance Testing Laboratory Ltd.

Add: 901, No.40 Building, Xialang Industrial Zone, Heshuikou Community, Matian Street, Guangming District, Shenzhen, Guangdong, China

Tel: +(86) 0755-82591330 | E-mail: webmaster@lcs-cert.com | Web: www.lcs-cert.com

Scan code to check authenticity



Sample No.	Sample Description	Results						Date of sample submission/ Resubmission
		Cd	Pb	Hg	Cr ^{VI}	Br ^{VI}		
						PBBs	PBDEs	
155	White plastic wire cover	BL	BL	BL	BL	BL	BL	2023-05-15
156	Green plastic wire cover	BL	BL	BL	BL	BL	BL	2023-05-15
157	Copper colored metal wire core	BL	BL	BL	BL	/	/	2023-05-15
158	White soft rubber	BL	BL	BL	BL	BL	BL	2023-05-15
159	Silver metal shell	BL	BL	BL	BL	/	/	2023-05-15
160	White soft rubber	BL	BL	BL	BL	BL	BL	2023-05-15
161	Beige plastic shell	BL	BL	BL	BL	BL	BL	2023-05-15
162	Silver metal sheet	BL	BL	BL	BL	/	/	2023-05-15
163	Black plastic block	BL	BL	BL	BL	BL	BL	2023-05-15
164	Silver metal stylus	BL	BL	BL	BL	/	/	2023-05-15
165	Blue plastic PCB	BL	BL	BL	BL	BL	BL	2023-05-15
166	Silver metal solder	BL	BL	BL	BL	/	/	2023-05-15

Note:

- Results were obtained by XRF for primary screening, and further chemical testing by ICP(for Cd, Pb, Hg), UV-Vis(for Cr(VI)) and GC-MS(for PBBs, PBDEs) are recommended to be performed, if the concentration exceeds the below warning value according to IEC 62321-3-1:2013(Unit: mg/kg).

Element	Polymers	Metals	Composite material
Cd	$BL \leq (70-3\sigma) < X < (130+3\sigma) \leq OL$	$BL \leq (70-3\sigma) < X < (130+3\sigma) \leq OL$	$LOD < X < (150+3\sigma) \leq OL$
Pb	$BL \leq (700-3\sigma) < X < (1300+3\sigma) \leq OL$	$BL \leq (700-3\sigma) < X < (1300+3\sigma) \leq OL$	$BL \leq (500-3\sigma) < X < (1500+3\sigma) \leq OL$
Hg	$BL \leq (700-3\sigma) < X < (1300+3\sigma) \leq OL$	$BL \leq (700-3\sigma) < X < (1300+3\sigma) \leq OL$	$BL \leq (500-3\sigma) < X < (1500+3\sigma) \leq OL$
Cr	$BL \leq (700-3\sigma) < X$	$BL \leq (700-3\sigma) < X$	$BL \leq (500-3\sigma) < X$
Br	$BL \leq (300-3\sigma) < X$	N/A	$BL \leq (250-3\sigma) < X$

Remark:

- BL= Below Limit
 - OL= Over Limit
 - X= The range of needing to do further testing
 - 3σ= The reproducibility of analytical instruments
 - N/A= Not applicable
 - LOD= Detection limit
- The XRF screening test for RoHS elements – The reading may be different to the actual content in the sample be of non-uniformity composition.
 - The maximum permissible limit is quoted from the document RoHS Directive 2011/65/EU with amendment (EU) 2015/863.
 - ▼=For restricted substances PBBs and PBDEs, the results show the total Br content, the restricted substance was Cr(VI), and the results showed the total Cr content.



Shenzhen LCS Compliance Testing Laboratory Ltd.

Add: 901, No.40 Building, Xialang Industrial Zone, Heshuikou Community, Matian Street, Guangming District, Shenzhen, Guangdong, China

Tel: +(86) 0755-82591330 | E-mail: webmaster@lcs-cert.com | Web: www.lcs-cert.com

Scan code to check authenticity



RoHS Restricted Substances	Maximum Concentration Value (mg/kg) (by weight in homogenous materials)
Cadmium(Cd)	100
Lead(Pb)	1000
Mercury(Hg)	1000
Hexavalent Chromium(Cr(VI))	1000
Polybrominated biphenyls(PBBs)	1000
Polybrominated diphenylethers(PBDEs)	1000
Dibutyl Phthalate(DBP)	1000
Butylbenzyl Phthalate(BBP)	1000
Di-(2-ethylhexyl) Phthalate(DEHP)	1000
Diisobutyl phthalate(DIBP)	1000

Disclaimers:

This XRF Screening report is for reference purposes only. The applicant shall make its/his/her own judgment as to whether the information provided in this XRF screening report is sufficient for its/his/her purposes. The result shown in this XRF screening report will differ based on various factors, including but not limited to, the sample size, thickness, area, surface flatness, equipment parameters and matrix effect (e.g. plastic, rubber, metal, glass, ceramic etc.). Further wet chemical pre-treatment with relevant chemical equipment analysis are required to obtain quantitative data.



**B. EU RoHS Directive 2011/65/EU with amendment (EU) 2015/863 on Lead(Pb), Cadmium(Cd), Mercury(Hg), Hexavalent Chromium(Cr(VI)), PBBs, PBDEs, DBP, BBP, DEHP & DIBP content****Test method:****Lead(Pb) & Cadmium(Cd) Content:**

With reference to IEC 62321-5:2013, by acid digestion and analysis was performed by inductively coupled plasma optical emission spectrometer (ICP-OES) or atomic absorption spectrometer (AAS).

Mercury(Hg) Content:

With reference to IEC 62321-4:2013+AMD1:2017 CSV, by acid digestion and analysis was performed by inductively coupled plasma optical emission spectrometer (ICP-OES).

Hexavalent Chromium(Cr(VI)) Content:

With reference to IEC 62321-7-1:2015 or IEC 62321-7-2:2017, analysis was performed by UV-visible spectrophotometer (UV-Vis).

PBBs & PBDEs Content:

With reference to IEC 62321-6:2015, by solvent extraction and analysis was performed by gas chromatographic-mass spectrometer (GC-MS).

Phthalates(DBP, BBP, DEHP & DIBP) Content:

With reference to IEC 62321-8:2017, by solvent extraction and analysis was performed by gas chromatographic-mass spectrometer (GC-MS).

1) The test results of Lead(Pb) & Cadmium(Cd)

Tested Items	MDL (mg/kg)	Results (mg/kg)		Limit (mg/kg)
		(13)	(24)	
Lead(Pb) Content	5	N.D.	59	1000

Tested Items	MDL (mg/kg)	Results (mg/kg)		Limit (mg/kg)
		(13)	(24)	
Cadmium(Cd) Content	5	N.D.	N.D.	100

2) The test results of Hexavalent Chromium(Cr(VI))(for coating on metal)

Tested Items	MDL ($\mu\text{g}/\text{cm}^2$)	Results ($\mu\text{g}/\text{cm}^2$)		Limit ($\mu\text{g}/\text{cm}^2$)
		(13)	(24)	
Hexavalent Chromium(Cr(VI)) Content★	0.10 (LOQ)	N.D.	N.D.	1000



Shenzhen LCS Compliance Testing Laboratory Ltd.

Add: 901, No.40 Building, Xialang Industrial Zone, Heshuikou Community, Matian Street, Guangming District, Shenzhen, Guangdong, China

Tel: +(86) 0755-82591330 | E-mail: webmaster@lcs-cert.com | Web: www.lcs-cert.com

Scan code to check authenticity

**3) The test results of Phthalates(DBP, BBP, DEHP &DIBP)**

Tested Items	MDL (mg/kg)	Results (mg/kg)				Limit (mg/kg)
		39	55	56	104	
Dibutyl Phthalate(DBP) Content	50	N.D.	N.D.	N.D.	N.D.	1000
Butylbenzyl Phthalate(BBP) Content	50	N.D.	N.D.	N.D.	N.D.	1000
Di-(2-ethylhexyl) Phthalate(DEHP) Content	50	N.D.	N.D.	N.D.	N.D.	1000
Diisobutyl phthalate(DIBP) Content	50	N.D.	N.D.	N.D.	N.D.	1000

Tested Items	MDL (mg/kg)	Results (mg/kg)				Limit (mg/kg)
		105	106	107	108	
Dibutyl Phthalate(DBP) Content	50	N.D.	N.D.	N.D.	N.D.	1000
Butylbenzyl Phthalate(BBP) Content	50	N.D.	N.D.	N.D.	N.D.	1000
Di-(2-ethylhexyl) Phthalate(DEHP) Content	50	N.D.	N.D.	N.D.	N.D.	1000
Diisobutyl phthalate(DIBP) Content	50	N.D.	N.D.	N.D.	N.D.	1000

Tested Items	MDL (mg/kg)	Results (mg/kg)				Limit (mg/kg)
		120	152	153	154	
Dibutyl Phthalate(DBP) Content	50	N.D.	N.D.	N.D.	N.D.	1000
Butylbenzyl Phthalate(BBP) Content	50	N.D.	N.D.	N.D.	N.D.	1000
Di-(2-ethylhexyl) Phthalate(DEHP) Content	50	N.D.	N.D.	N.D.	N.D.	1000
Diisobutyl phthalate(DIBP) Content	50	N.D.	N.D.	N.D.	N.D.	1000

Tested Items	MDL (mg/kg)	Results (mg/kg)		Limit (mg/kg)
		155	156	
Dibutyl Phthalate(DBP) Content	50	N.D.	N.D.	1000
Butylbenzyl Phthalate(BBP) Content	50	N.D.	N.D.	1000
Di-(2-ethylhexyl) Phthalate(DEHP) Content	50	N.D.	N.D.	1000
Diisobutyl phthalate(DIBP) Content	50	N.D.	N.D.	1000



Shenzhen LCS Compliance Testing Laboratory Ltd.

Add: 901, No.40 Building, Xialang Industrial Zone, Heshuikou Community, Matian Street, Guangming District, Shenzhen, Guangdong, China

Tel: +(86) 0755-82591330 | E-mail: webmaster@lcs-cert.com | Web: www.lcs-cert.com

Scan code to check authenticity



Tested Items	MDL (mg/kg)	Results (mg/kg)	Limit (mg/kg)
		1+2+3+4+5+7	
Dibutyl Phthalate(DBP) Content	50	N.D.	1000
Butylbenzyl Phthalate(BBP) Content	50	N.D.	1000
Di-(2-ethylhexyl) Phthalate(DEHP) Content	50	N.D.	1000
Diisobutyl phthalate(DIBP) Content	50	N.D.	1000

Tested Items	MDL (mg/kg)	Results (mg/kg)	Limit (mg/kg)
		8+10+11+12+14+15	
Dibutyl Phthalate(DBP) Content	50	N.D.	1000
Butylbenzyl Phthalate(BBP) Content	50	N.D.	1000
Di-(2-ethylhexyl) Phthalate(DEHP) Content	50	N.D.	1000
Diisobutyl phthalate(DIBP) Content	50	N.D.	1000

Tested Items	MDL (mg/kg)	Results (mg/kg)	Limit (mg/kg)
		17+18+21+22+29+30	
Dibutyl Phthalate(DBP) Content	50	N.D.	1000
Butylbenzyl Phthalate(BBP) Content	50	N.D.	1000
Di-(2-ethylhexyl) Phthalate(DEHP) Content	50	N.D.	1000
Diisobutyl phthalate(DIBP) Content	50	N.D.	1000

Tested Items	MDL (mg/kg)	Results (mg/kg)	Limit (mg/kg)
		31+33+36+37+42+43	
Dibutyl Phthalate(DBP) Content	50	N.D.	1000
Butylbenzyl Phthalate(BBP) Content	50	N.D.	1000
Di-(2-ethylhexyl) Phthalate(DEHP) Content	50	N.D.	1000
Diisobutyl phthalate(DIBP) Content	50	N.D.	1000



Shenzhen LCS Compliance Testing Laboratory Ltd.

Add: 901, No.40 Building, Xialang Industrial Zone, Heshuikou Community, Matian Street, Guangming District, Shenzhen, Guangdong, China

Tel: +(86) 0755-82591330 | E-mail: webmaster@lcs-cert.com | Web: www.lcs-cert.com

Scan code to check authenticity



Tested Items	MDL (mg/kg)	Results (mg/kg)	Limit (mg/kg)
		45+46+47+48+50+52	
Dibutyl Phthalate(DBP) Content	50	N.D.	1000
Butylbenzyl Phthalate(BBP) Content	50	N.D.	1000
Di-(2-ethylhexyl) Phthalate(DEHP) Content	50	N.D.	1000
Diisobutyl phthalate(DIBP) Content	50	N.D.	1000

Tested Items	MDL (mg/kg)	Results (mg/kg)	Limit (mg/kg)
		58+60+62+65+69+70	
Dibutyl Phthalate(DBP) Content	50	N.D.	1000
Butylbenzyl Phthalate(BBP) Content	50	N.D.	1000
Di-(2-ethylhexyl) Phthalate(DEHP) Content	50	N.D.	1000
Diisobutyl phthalate(DIBP) Content	50	N.D.	1000

Tested Items	MDL (mg/kg)	Results (mg/kg)	Limit (mg/kg)
		71+72+73+75+76+77	
Dibutyl Phthalate(DBP) Content	50	N.D.	1000
Butylbenzyl Phthalate(BBP) Content	50	N.D.	1000
Di-(2-ethylhexyl) Phthalate(DEHP) Content	50	N.D.	1000
Diisobutyl phthalate(DIBP) Content	50	N.D.	1000

Tested Items	MDL (mg/kg)	Results (mg/kg)	Limit (mg/kg)
		78+80+82+83+86+87	
Dibutyl Phthalate(DBP) Content	50	N.D.	1000
Butylbenzyl Phthalate(BBP) Content	50	N.D.	1000
Di-(2-ethylhexyl) Phthalate(DEHP) Content	50	N.D.	1000
Diisobutyl phthalate(DIBP) Content	50	N.D.	1000



Shenzhen LCS Compliance Testing Laboratory Ltd.

Add: 901, No.40 Building, Xialang Industrial Zone, Heshuikou Community, Matian Street, Guangming District, Shenzhen, Guangdong, China

Tel: +(86) 0755-82591330 | E-mail: webmaster@lcs-cert.com | Web: www.lcs-cert.com

Scan code to check authenticity



Tested Items	MDL (mg/kg)	Results (mg/kg)	Limit (mg/kg)
		90+92+96+97+98+101	
Dibutyl Phthalate(DBP) Content	50	N.D.	1000
Butylbenzyl Phthalate(BBP) Content	50	N.D.	1000
Di-(2-ethylhexyl) Phthalate(DEHP) Content	50	N.D.	1000
Diisobutyl phthalate(DIBP) Content	50	N.D.	1000

Tested Items	MDL (mg/kg)	Results (mg/kg)	Limit (mg/kg)
		102+111+113+115+117+118	
Dibutyl Phthalate(DBP) Content	50	N.D.	1000
Butylbenzyl Phthalate(BBP) Content	50	N.D.	1000
Di-(2-ethylhexyl) Phthalate(DEHP) Content	50	N.D.	1000
Diisobutyl phthalate(DIBP) Content	50	N.D.	1000

Tested Items	MDL (mg/kg)	Results (mg/kg)	Limit (mg/kg)
		119+123+125+128+130+131	
Dibutyl Phthalate(DBP) Content	50	N.D.	1000
Butylbenzyl Phthalate(BBP) Content	50	N.D.	1000
Di-(2-ethylhexyl) Phthalate(DEHP) Content	50	N.D.	1000
Diisobutyl phthalate(DIBP) Content	50	N.D.	1000

Tested Items	MDL (mg/kg)	Results (mg/kg)	Limit (mg/kg)
		137+138+141+142+143+145	
Dibutyl Phthalate(DBP) Content	50	N.D.	1000
Butylbenzyl Phthalate(BBP) Content	50	N.D.	1000
Di-(2-ethylhexyl) Phthalate(DEHP) Content	50	N.D.	1000
Diisobutyl phthalate(DIBP) Content	50	N.D.	1000





Tested Items	MDL (mg/kg)	Results (mg/kg)	Limit (mg/kg)
		146+147+149+150+158+160	
Dibutyl Phthalate(DBP) Content	50	N.D.	1000
Butylbenzyl Phthalate(BBP) Content	50	N.D.	1000
Di-(2-ethylhexyl) Phthalate(DEHP) Content	50	N.D.	1000
Diisobutyl phthalate(DIBP) Content	50	N.D.	1000

Tested Items	MDL (mg/kg)	Results (mg/kg)	Limit (mg/kg)
		161+163+165	
Dibutyl Phthalate(DBP) Content	50	N.D.	1000
Butylbenzyl Phthalate(BBP) Content	50	N.D.	1000
Di-(2-ethylhexyl) Phthalate(DEHP) Content	50	N.D.	1000
Diisobutyl phthalate(DIBP) Content	50	N.D.	1000

Note:

- MDL = Method Detection Limit
- N.D. = Not Detected (<MDL or LOQ)
- mg/kg = milligrams per kilogram
- LOQ = Limit Of Quantification, The LOQ of Hexavalent chromium is 0.10 $\mu\text{g}/\text{cm}^2$
- ★ = a. The sample is positive for Cr(VI) if the Cr(VI) concentration is greater than 0.13 $\mu\text{g}/\text{cm}^2$. The sample coating is considered to contain Cr(VI).
b. The sample is negative for Cr(VI) if Cr(VI) is N.D.(concentration less than 0.10 $\mu\text{g}/\text{cm}^2$). The sample coating is considered a non- Cr(VI) based coating.
c. The result between 0.10 $\mu\text{g}/\text{cm}^2$ and 0.13 $\mu\text{g}/\text{cm}^2$ is considered to be inconclusive, unavoidable coating variations may influence the determination.
- Information on storage conditions and production date of the tested samples is unavailable and thus Cr(VI) results represent status of the sample at the time of testing.
- According to customer's requirement, only the appointed materials have been tested.



Shenzhen LCS Compliance Testing Laboratory Ltd.

Add: 901, No.40 Building, Xialang Industrial Zone, Heshuikou Community, Matian Street, Guangming District, Shenzhen, Guangdong, China

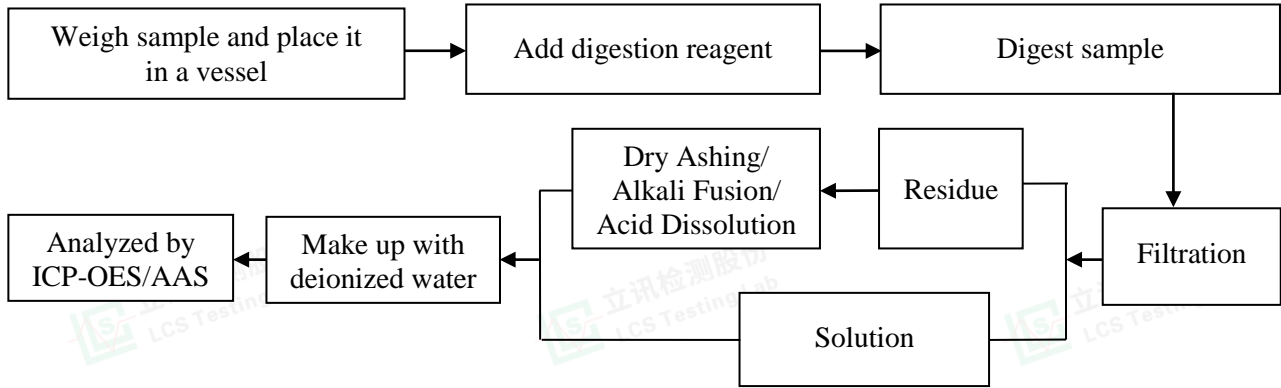
Tel: +(86) 0755-82591330 | E-mail: webmaster@lcs-cert.com | Web: www.lcs-cert.com

Scan code to check authenticity

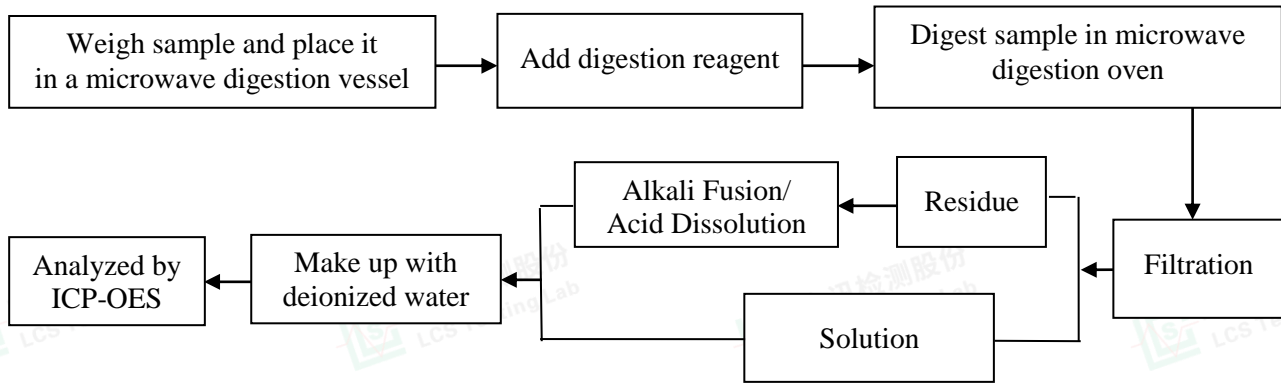


Test Process

1. Lead(Pb) & Cadmium(Cd): IEC 62321-5:2013

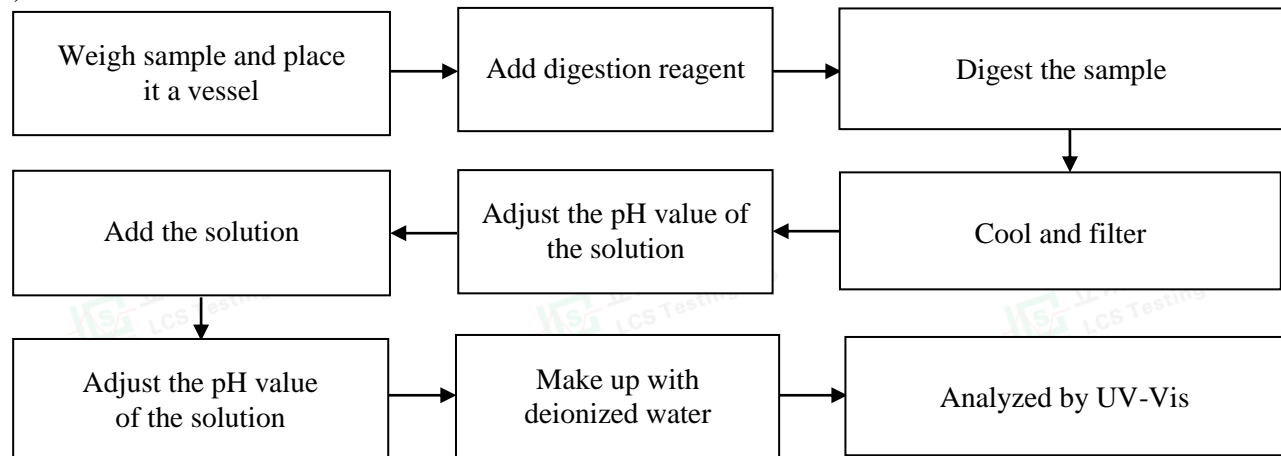


2. Mercury(Hg): IEC 62321-4:2013+AMD1:2017 CSV



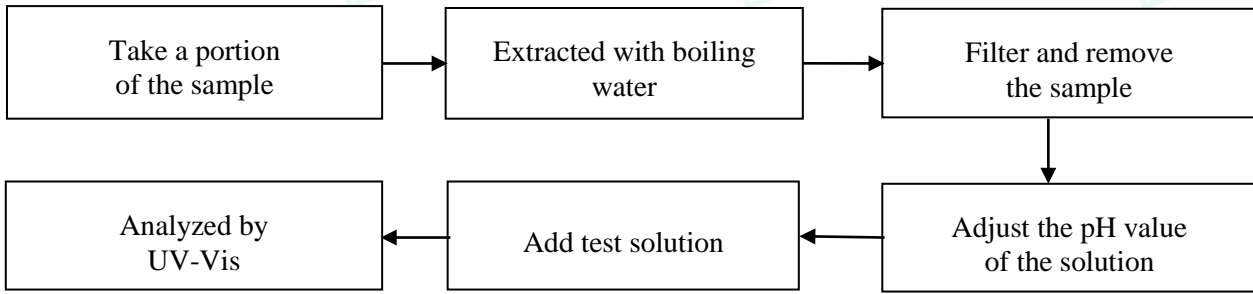
3. Hexavalent Chromium(Cr(VI))

1) IEC 62321-7-2:2017

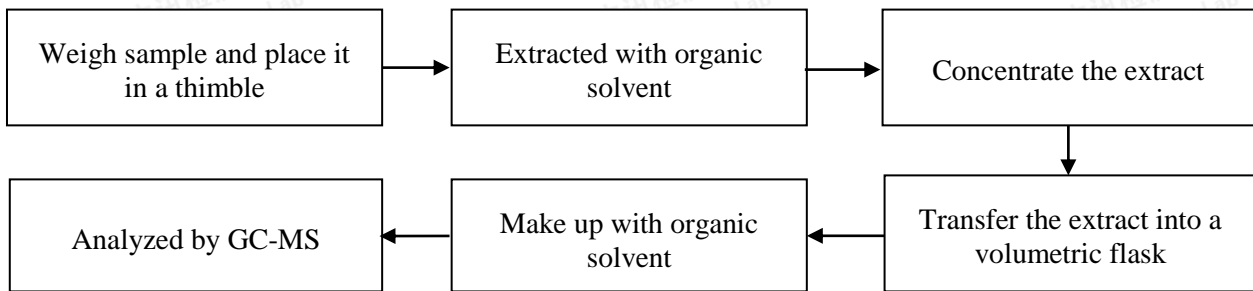




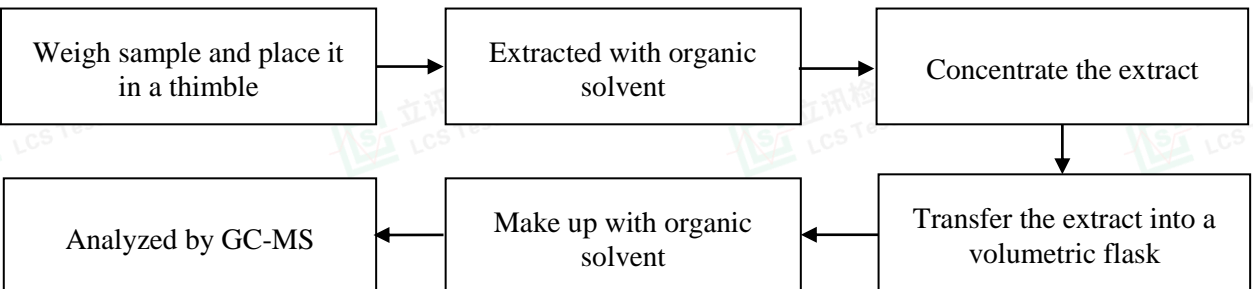
2) IEC 62321-7-1:2015



4. Polybrominated Biphenyls(PBBs) & Polybrominated Diphenyl Ethers(PBDEs) : IEC 62321-6:2015

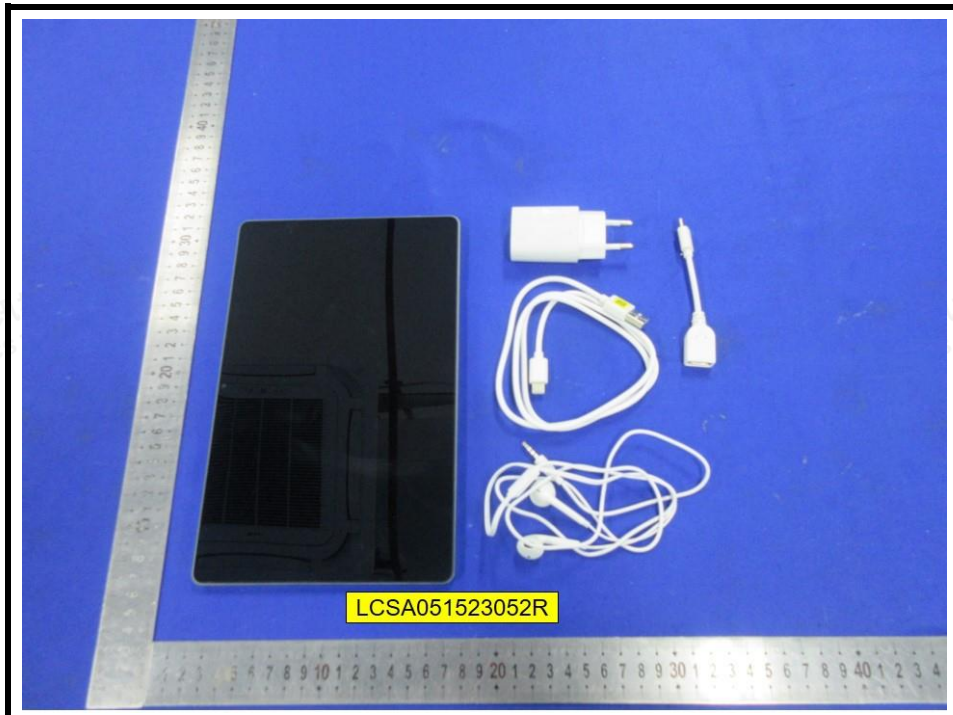


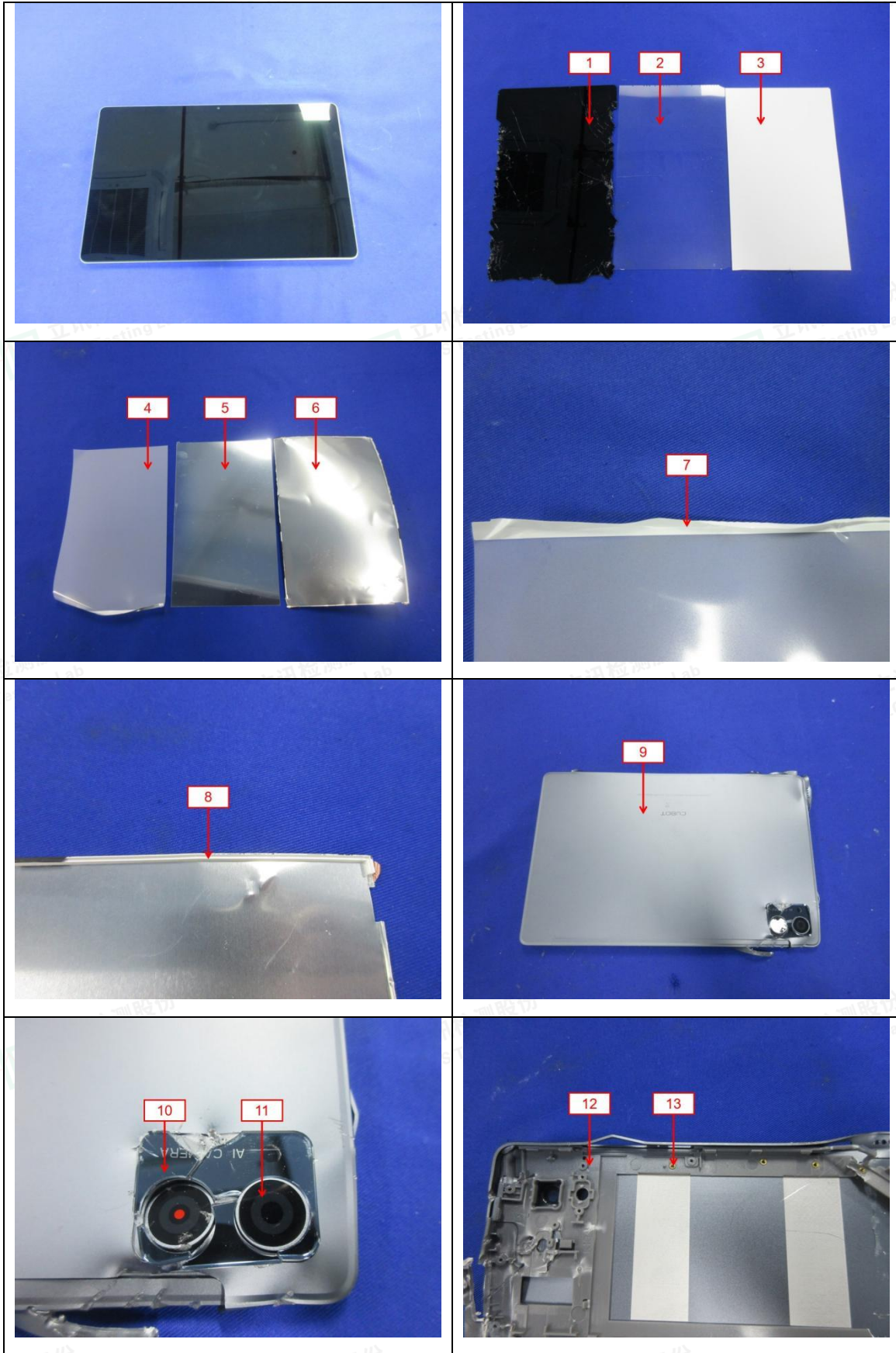
5. Phthalates(DBP, BBP, DEHP & DIBP) : IEC 62321-8:2017

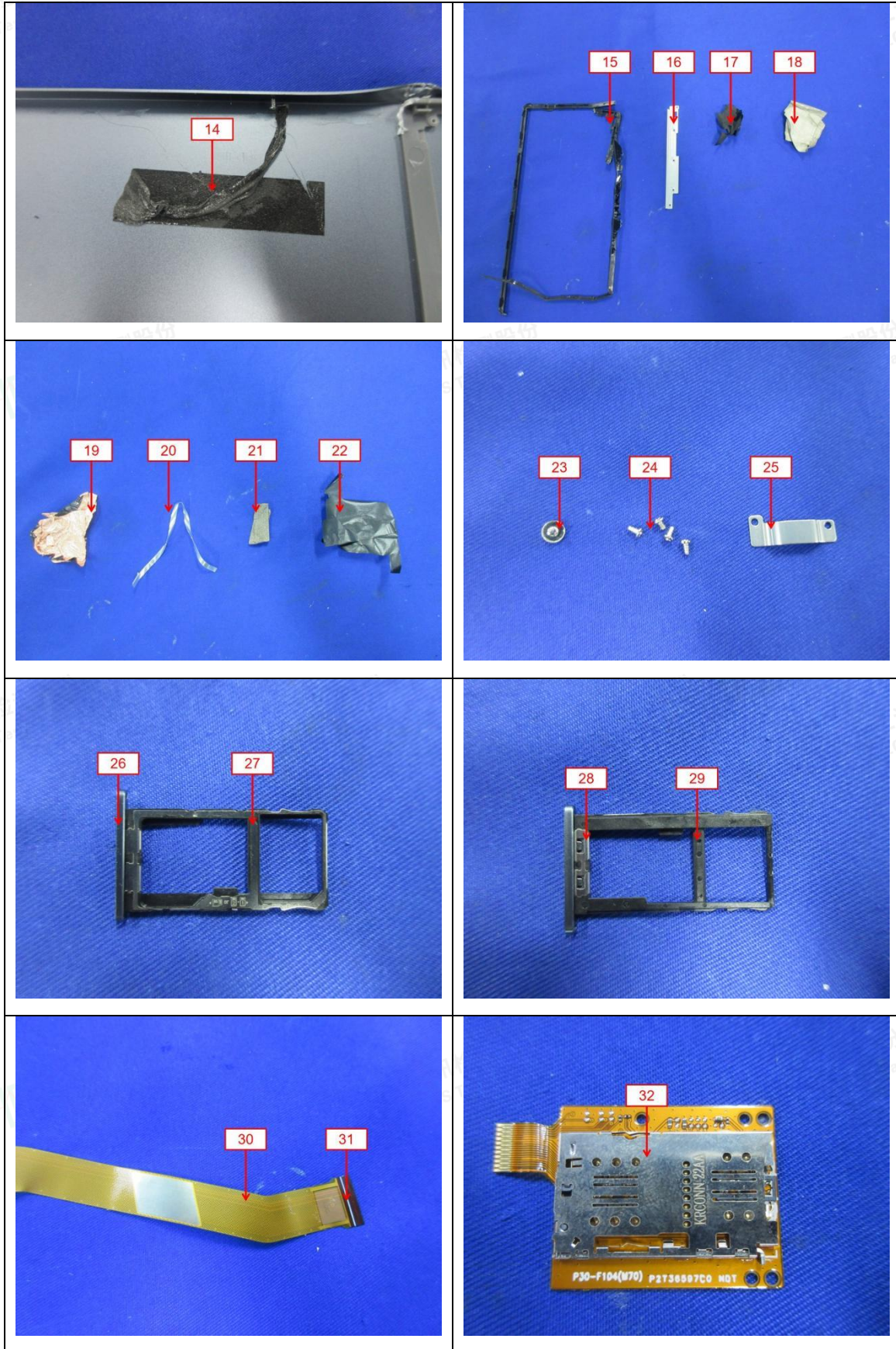


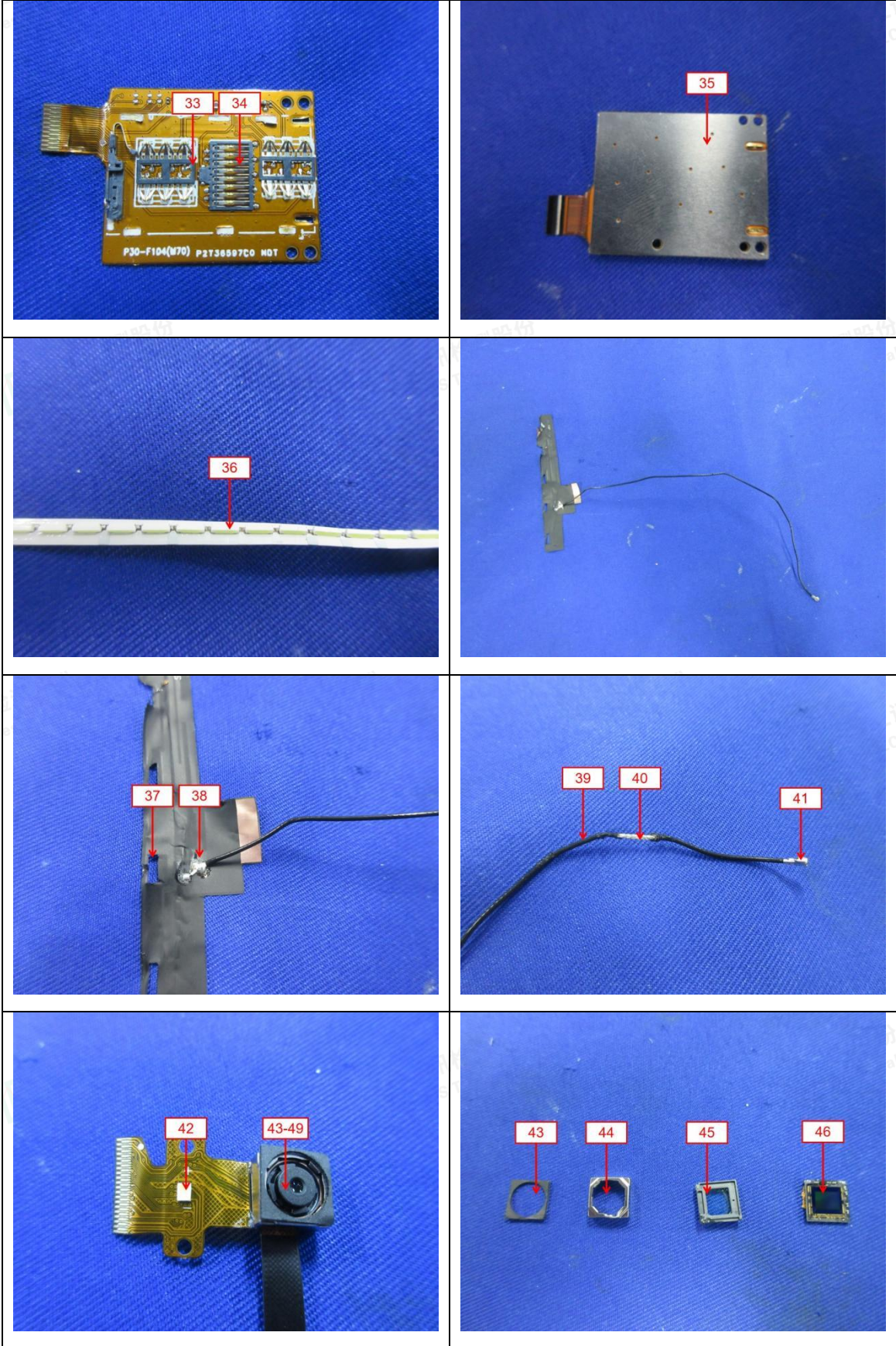


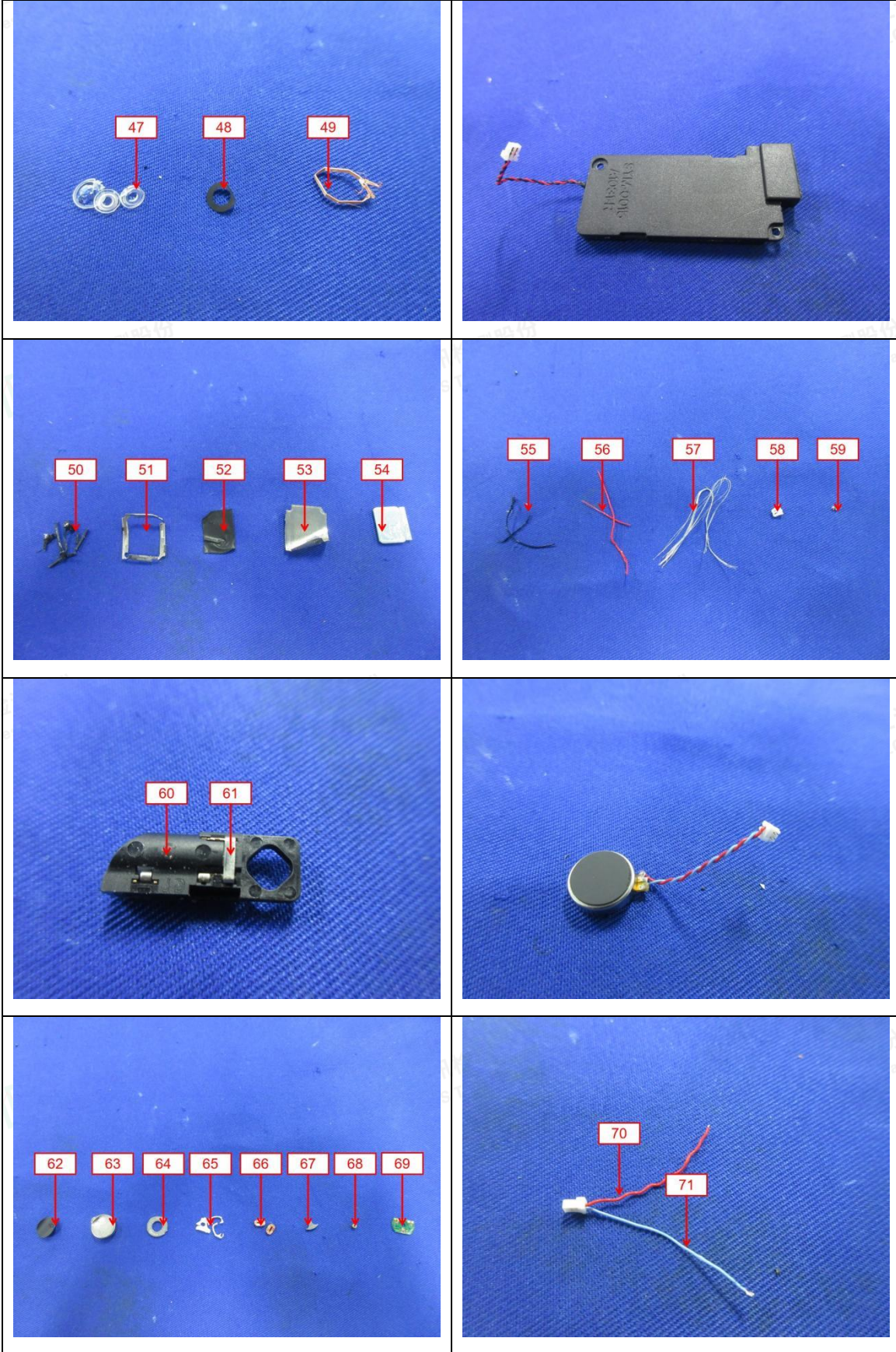
The photo(s) of the sample

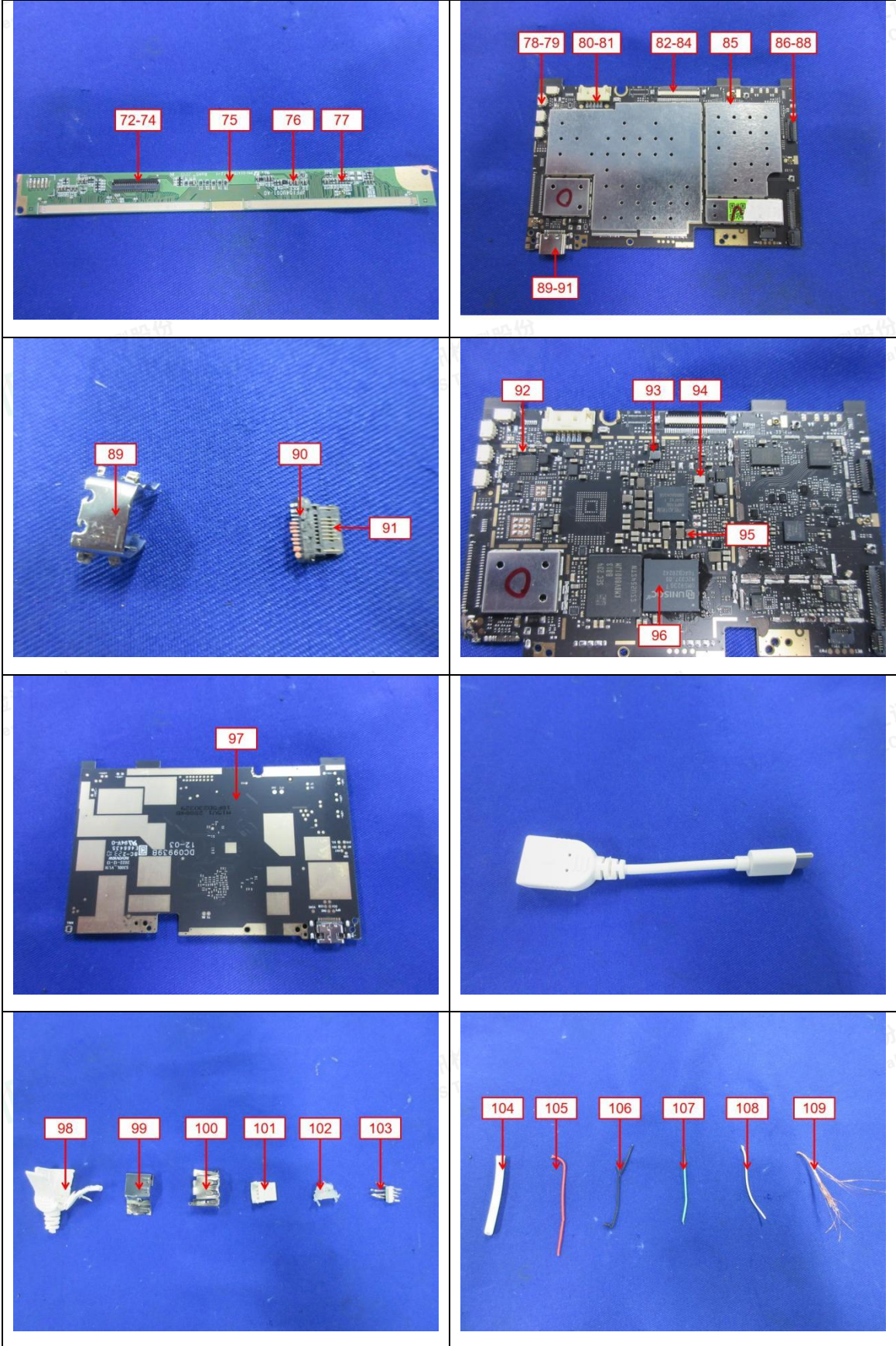


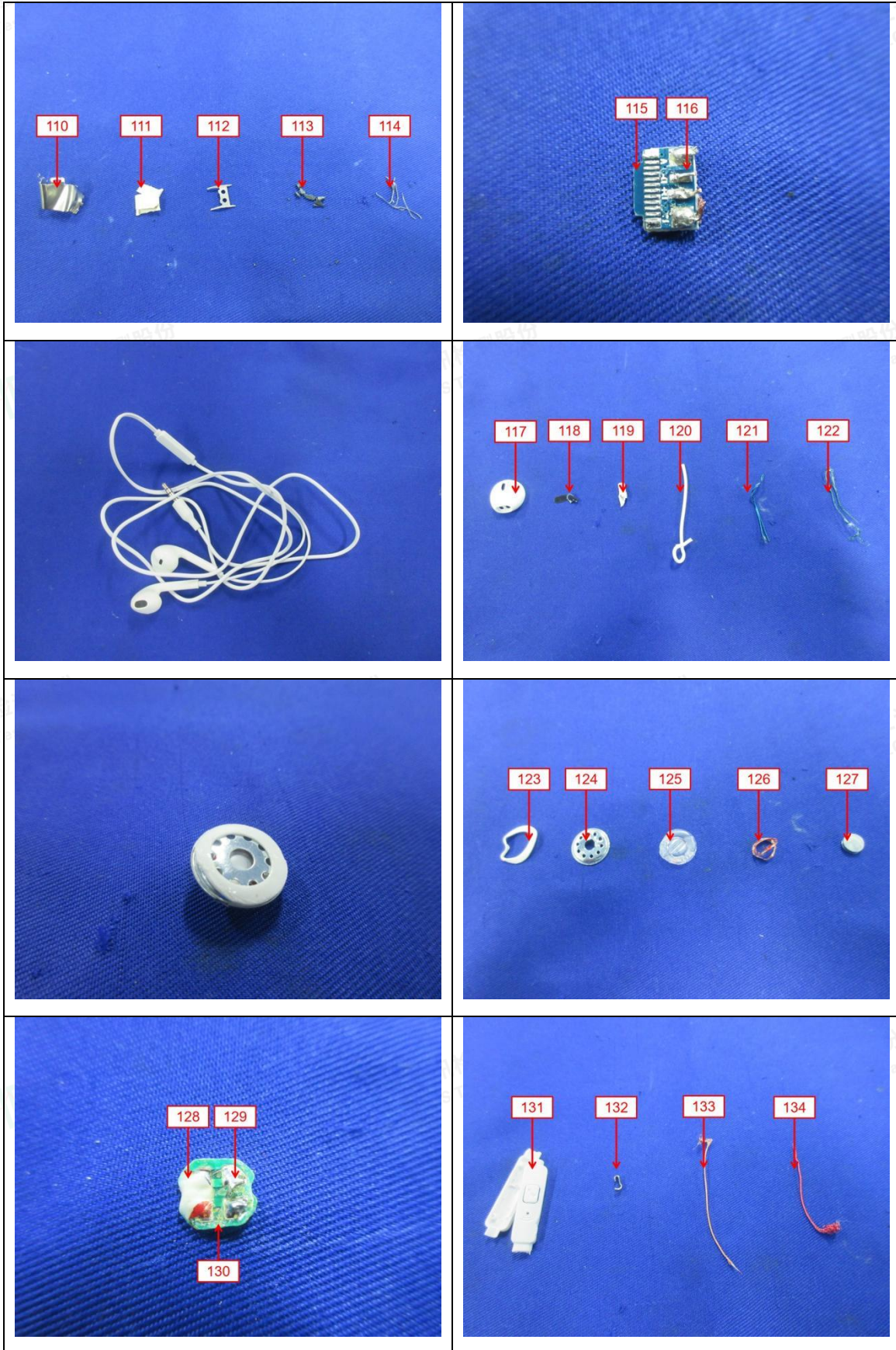


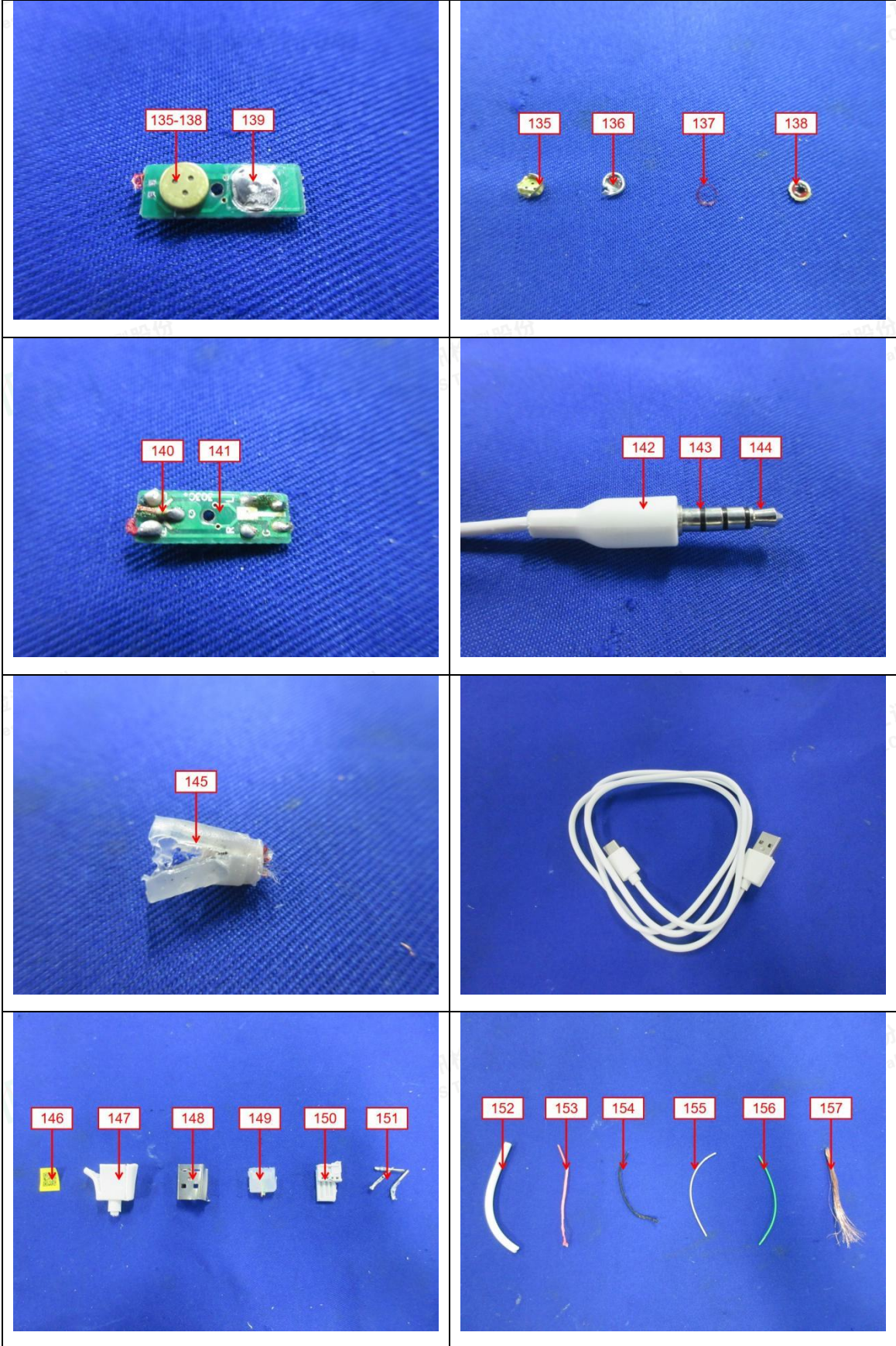


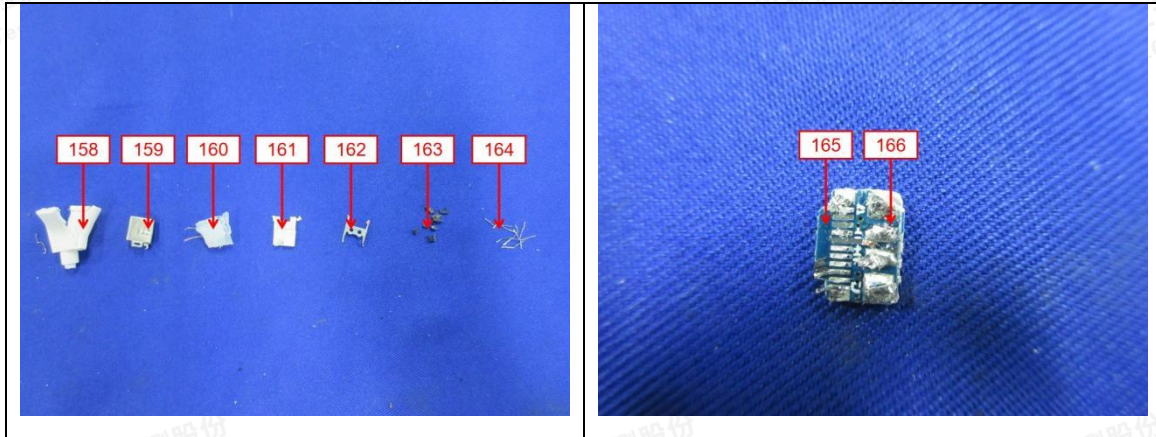












Statement:

1. The test report is invalid without the signature of the approver and the special seal for the company's report;
2. The company name, address and sample information shown on the report were provided by the applicant who should be responsible for the authenticity which are not verified by LCS;
3. The test results in this report are only responsible for the tested samples;
4. Without written approval of LCS, this report can't be reproduced except in full;
5. In case of any discrepancy between the corresponding Chinese and English contents in the test report, the Chinese version shall prevail.

*** End of Report ***

